

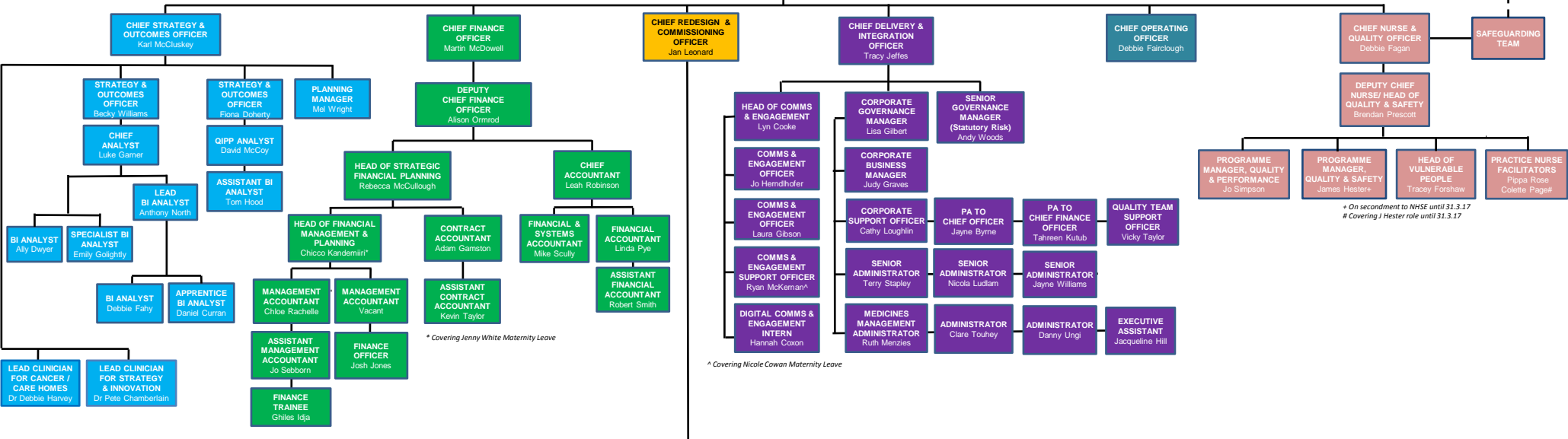
Joint Management Structure

updated 3rd January 2017

Wider Constituent CCG Members Group

CHAIRS / GOVERNING BODIES

CHIEF OFFICER
Fiona Taylor



* Covering Jenny White Maternity Leave

* Covering Nicole Cowan Maternity Leave

* On secondment to NHSE until 31.3.17
Covering J Hester role until 31.3.17

HEAD OF MEDICINES MANAGEMENT
Susanne Lynch

PRIMARY CARE COMMISSIONING MANAGER
Angela Price

HEAD OF COMMISSIONING
Billie Dodd

SENIOR INTEGRATED COMMISSIONING TEAM MANAGER
Gerardine O'Carroll

PROGRAMME LEAD - COMMUNITY SERVICES PROCUREMENT
Danielle Love

